

State of Wyoming Corner Record

(In compliance with the *CORNER PERPETUATION AND FILING ACT*, Wyoming Statutes, 1977, Section 36-11-101, et. seq., and the Rules and Regulations of the Board of Registration for Professional Engineers and Professional Land Surveyors)

Reverse side of this form may be used if more space is needed.

Record of original survey and citation of source of historical information (if corner is lost or obliterated). Description of corner monumentation evidence found and/or monument and accessories established to perpetuate the location of this corner. Sketch of relative location of monument, accessories, and reference points with course and distance to adjacent corner(s) (if determined in this survey). Method and rationale for reestablishment of lost or obliterated corner.

G.L.O. Notes: U.S. Deputy Surveyor, John B. Thomas, September 15, 1870; 40.50 Chains...Set Granite Boulder 15 x 8 x 6 for 1/4 Sec Cor.

Subsequent Records: Reymore Addition, A Vacated Subdivision, See Book 948, Page 450, Laramie County Clerk, circa 1972; T.H. Baldwin survey, Book 606 Page 87, circa 1956; T.H. Baldwin survey of 1960 (not of public record); Malcolm D. Martin field notes of a survey, circa Nov. 1 & 2, 1960, not of public record; E.P. Kelly & Assoc. survey of June 9, 1972, not of public record. All being contained in the files of Steil Surveying Services, Job No. 92100, of which the "Record of Survey for Leroy Manley" was performed by me during the month of July, 1992.

Set: From found iron pipes and spikes of the previous surveys noted above, I set the S 1/4 Corner of Section 24 with a No. 5 x 24" rebar with 2" aluminum cap, circa July, 1992.

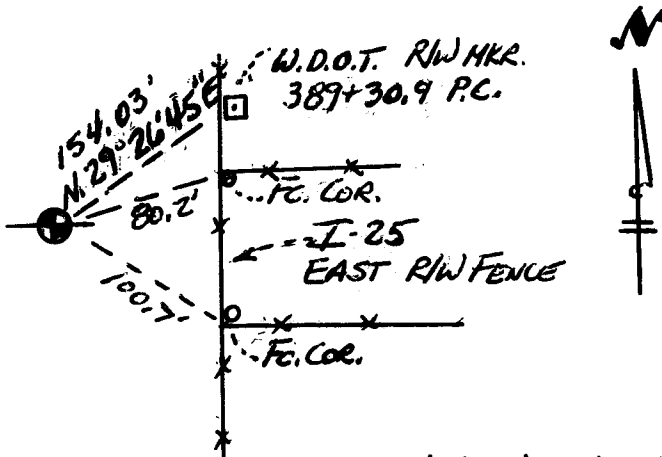
See back of this sheet for ties to adjacent monuments.

Aluminum Cap Markings

SSS
T15N R67W
S24
1/4
S25
LS 2500

LARAMIE COUNTY CLERK
CHEYENNE, WY.
'96 MAR 1 PM 12 15

178477



Sketched Reference Point Ties to Corner

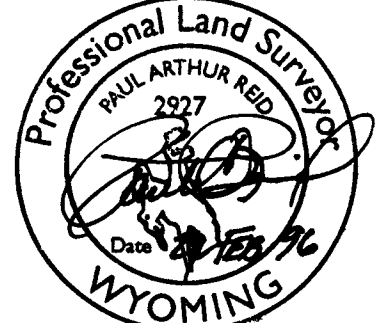
Date of Field Work: July, 1992 Office Reference: Job No. 2-1930.95

CROSS INDEX DIAGRAM

1	2	3	4	5	6	7	8	9	10	11	12	13	14	15	16	17	18	19	20	21	22	23	24	25	26	
A																										
B	6	5	4	3	2	1																				
C																										
D																										
E																										
F																										
G																										
H																										
I																										
J																										
K																										
L	18	17	16	15	14	13																				
M																										
N																										
O																										
P																										
Q																										
R																										
S																										
T																										
U																										
V																										
W																										
X																										
Y																										
Z																										
AA																										

Firm/Agency, Address
Paul A. Reid, A.V.I.P.C.
2035 Westland Road
Cheyenne, WY 82001
 Telephone Number:
(307)-634-6017

This corner record was prepared by me or under my direction and supervision.
SEAL & SIGNATURE



Corner Name: S 1/4 corner Section: 24 T 15N R 67W; 6TH P.M. Cross-Index No.: R-23

SBRPEPLS/PLSW: March 1994

1375

BOOK 1418

BASIS OF BEARINGS: BEARINGS ARE GRID AND BASED UPON THE USE OF THE TRIMBLE GPS TOTAL STATION SYSTEM AND WGS 84 DATUM. THE ORIGIN BEING LOCATED @ A LOCAL CONTROL POINT BEING A 1 1/2" ALUMINUM CAP MARKED "CP WARREN" AT 41° 15' 28.68311"N LATITUDE AND 104° 49' 23.61968"W LONGITUDE AND BEING APPROXIMATELY 1,320' SOUTH AND 1340' EAST OF THE NW CORNER OF SECTION 19, T. 15N., R. 66W., 6TH P.M.

